

AXESS CABLING SYSTEM

Providing Solution to Digital Cabling Needs



AXESS CABLING SYSTEM

QuantumX Inc.

11654 Plaza America Drive Suite 232 Reston, VA20190

United States of America



Networking Cables

Coaxial Cables

Fiber Optics

Copper Components

Contents

2/7 Networking Cables

- Category 3 UTP Cables
- Category 5 Cables
- Category 5 Enhanced Cables
- Category 6A U/FTP Cable
- Copper Patch Cords
- Outdoor Telephone Cable

8/15 Coaxial Cables

- RG 58 Coaxial Cables
- RG 59 Coaxial Cables
- RG 6 Coaxial Cables
- RG 11 Coaxial Cables
- Other Series Coaxial Cables

16/37 Fiber Optics

- Fiber Optic Distribution Cable
- Central Tube Outdoor Armored Cable
- Steel Messengered Loose Tube-Aerial Cable
- Aerial&Conduit GYXTA Optical Fiber Cable
- Aerial&Conduit GYXTA Optical Fiber Cable
- Aerial&Conduit GYTS Optical Fiber Cable
- Aerial&Conduit GYTA Optical Fiber Cable
- Aerial&Conduit GYTA63 Optical Fiber Cable
- Direct Buried GYTA53 Optical Fiber Cable
- Direct Buried&Under-water GYTA33 Optical Fiber Cable
- FTY Optical Fiber Cable
- Aerial&Conduit Optical GYDXTW Optical Fiber Cable
- Aerial&Conduit Ribbon GYDTS Optical Fiber Cable
- Aerial&Conduit Ribbon GYDTA Optical Fiber Cable
- Fiber To The Home Series
- Fiber Optic Splice & Termination Box
- Fiber optic patch cord

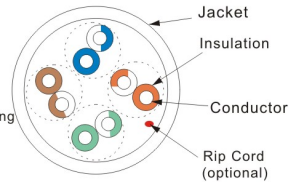
38/40 Copper Components

- Copper Components

Category 3 UTP Cables

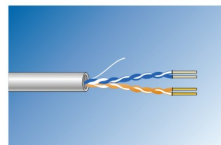
Product Description

Rated temperature: 60 , 75
 Guaranteed for applications up to 16MHz
 Bare solid copper conductor
 Polypropylene Insulation PVC jacket
 Suitable for horizontal (2,4 pr.) and vertical (25, 50, 100 pr.) telephone wiring
 Flammability Grade Options: CMX, CM, MP, CMG, MPG, CMR, MPR, CMP.



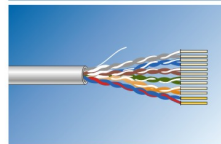
Cable Construction

No. of Pairs	Part Number	Conductor Diameter (mm)	Core Diameter (mm)	Shielding	Nom O.D. (mm)
2	XA-03021	0.51	0.91	nil	4.5
6	XA-03061	0.51	0.91	nil	5.9
8	XA-03081	0.51	0.91	nil	6.8
12	XA-03121	0.51	0.91	nil	8.0
16	XA-03161	0.51	0.91	nil	8.9
20	XA-03201	0.51	0.91	nil	10.0
25	XA-03251	0.51	0.91	nil	12.5
50	XA-03501	0.51	0.91	nil	17.0
100	XA-03001	0.51	0.91	nil	25.0



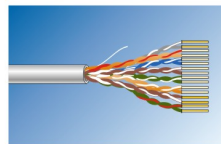
UTP CAT 3 2pairs (XA-03021)

- Used to transmit audio signal
- IEEE 802.3 10 Base-T
- Conforms to EIA/TIA 568-B.2, Category 3



UTP CAT 3 6pairs (XA-03061)

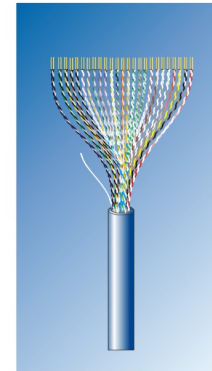
- Used to transmit audio signal
- IEEE 802.310 Base-T
- Conforms to EIA/TIA 568-B.2, Category 3



UTP CAT 3 8pairs (XA-03081)

- Used to transmit audio signal
- IEEE 802.310 Base-T
- Conforms to EIA/TIA 568-B.2, Category 3

Category 3 UTP Cables



UTP CAT 3 12pairs (XA-03121)

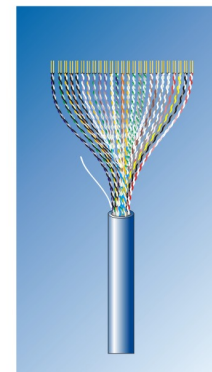
- Used to transmit audio signal
- IEEE 820.310 Base-T
- Conforms to EIA/TIA 568-B.2, Category 3

UTP CAT 3 16pairs (XA-03161)

- Used to transmit audio signal
- IEEE 820.310 Base-T
- Conforms to EIA/TIA 568-B.2, Category 3

UTP CAT 3 20pairs (XA-03201)

- Used to transmit audio signal
- IEEE 820.310 Base-T
- Conforms to EIA/TIA 568-B.2, Category 3



UTP CAT 3 25pairs (XA-03251)

- Used to transmit audio signal
- Used in building backbone cabling system
- IEEE 802.3 10 Base-T
- Conforms to EIA/TIA 568-B.2, Category 3

UTP CAT 3 50pairs (XA-03501)

- Used to transmit audio signal
- Used in building backbone cabling system
- IEEE 802.3 10 Base-T
- Conforms to EIA/TIA 568-B.2, Category 3

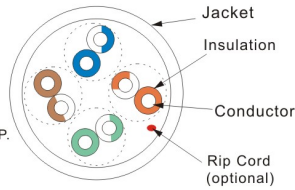
UTP CAT 3 100pairs (XA-031001)

- Used to transmit audio signal
- Used in building backbone cabling system
- IEEE 802.3 10 Base-T
- Conforms to EIA/TIA 568-B.2, Category 3

Category 5 Cables

Product Description

Rated temperature: 60 , 75
 PE insulation
 Twisted pairs cabled together
 PVC or LSOH jacket
 Conforms to EIA/TIA B.2 Category 5E
 Flammability Grade Options: CMX, CM, MP, CMG, MPG, CMR, MPR, CMP.



Cable Construction

No. of Pairs	Part Number	Conductor Diameter (mm)	Core Diameter (mm)	Shielding	Nom O.D (mm)
4	XA-05E041	0.51	0.91	nil	5.1
4	XA-05E042	0.53	1.00	Al Foil	6.3
4	XA-15E041	7/0.20	0.98	nil	5.5
25	XA-05251	0.51	0.91	nil	12.5
50	XA-05501	0.51	0.91	nil	17.0



UTP CAT 5 25pairs (XA-05251)

- 100 Base-T4; 100 Base-TX; 1000 Base-T
- 100 VG-AnyLan
- RS-422, Token Ring
- 155/ 622Mbps ATM
- Telephone and Multimedia networks
- Digital Video, 100 Mbps TP-PMD

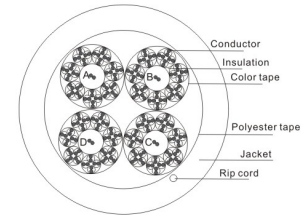
UTP CAT 5 50pairs (XA-05501)

- 100 Base-T4; 100 Base-TX; 1000 Base-T
- 100 VG-AnyLan
- RS-422, Token Ring
- 155/ 622Mbps ATM
- Telephone and Multimedia networks
- Digital Video, 100 Mbps TP-PMD

Category 5 100-Pairs Unshielded Twisted Pairs (UTP) XA-05100

Product Description

Rated temperature : 75 deg C
 Reference Standard : UL444 TIA/EIA 568.B-2 ISO /IEC 11801
 Flame Test :
 Core : Solid Bare Copper
 Insulation : Color coded Polyethylene
 Jacket : Gray PVC
 Packaging : Wooden Reel



PHYSICAL CHARACTERISTICS:

Structure	Construction	U/UTP	
	Number of pairs	100 PairS	
Conductor	AWS	24 AWG	
	Conductor material	Solid bare copper	
	Conductor dimension	0.52±0.02 mm	
Insulation	Insulation material	HDPE	
	Insulation dimension	0.9±0.05 mm	
	Number colour	See Table 1	
	(Multi Pair See Table 1)		
Cabling	Twisting lay length	≤30 mm	
	Cabling lay length	≤500 mm	
Filler	Filler material	N/A	
Shield	Individual shield & material	N/A	
	Primary overall shield & material	N/A	
	Secondary overall shield & material	N/A	
	Color tape	blue orange green brown	
Outer jacket	PET tape	Yes	
	Outer jacket material	PVC	
	Outer jacket thickness	0.75mm	
	Overall nominal dimension	23±3mm	
Mechanical characteristics	Outer jacket rip cord	Yes	
	Operating temp. range	-20°C ~ +75°C	
	Bulk cable weight	570 kg/km	
	Max. recommended rulling tension	80 N	
	Min. bend radius (Install)	8XO.D.	
	Outer jacket tensile strength	≥13.8 Mpa	
	Outer jacket elongation	≥100%	
	Outer jacket aging condition	100°C x 168 hrs	
	After aging, Tensile strength	≥75% of Unaging	
	After aging, elongation	≥50% of Unaging	
	Cold bend	No crack (@ -20°C x 4hrs)	
	Electrical characteristics	Nom. mutual capacitance	≤5.6 nF/100m (@ 1kHz)
		Pair to ground capacitance unbalance	≤330 pF/1Km
Nominal velocity of propagation		60%	
Max. delay skew		45 ns/100m	
Max. conductor DC resistance		93.8 Ω/km (@20°C)	
Max. conductor resistance unbalance		5% (@20°C)	
Min insulation resistance		150 MΩ · km	
Max. operating voltage-UL	300 V		

APPLICATION:

- 100 Base-T4
- 100 Base-TX
- 100 Base-AnyLAN

COLOR CODING: Table 1

Pair	Wire1	Wire2	Pair	Wire1	Wire2
1	blue	white	14	brown	black
2	orange	white	15	gray	black
3	green	white	16	blue	yellow
4	brown	white	17	orange	yellow
5	gray	white	18	green	yellow
6	blue	red	19	brown	yellow
7	orange	red	20	gray	yellow
8	green	red	21	blue	purple
9	brown	red	22	orange	purple
10	gray	red	23	green	purple
11	blue	black	24	brown	purple
12	orange	black	25	gray	purple
13	green	black			

Category 5E 4-Pairs (F/UTP) Cable Outdoor XA-05E042-O

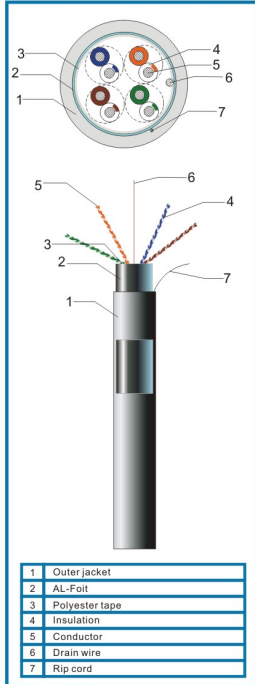
Product Description

Rated temperature : 75 deg C
 Reference Standard : UL444 TIA/EIA 568-B.2 ISO /IEC 11801, 61156-5
 Flame Test : UL CM
 Core : Solid Bare Copper
 Insulation : Color coded Polyethylene
 Jacket : Outdoor PVC, UV Resistant
 Packaging : Box/Wooden Reel

Application:

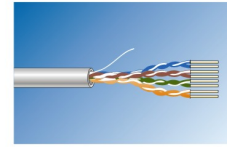
-100 Base – T4/TX
 -100 Base AnyLAN
 -1000 Base – T/TX
 -155Mbps ATM
 -622Mbps ATM

PHYSICAL CHARACTERISTICS:



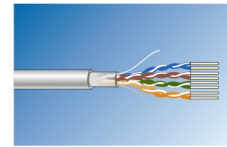
Structure	Construction	F/UTP
	Number of pairs	4 PairS
Conductor	AWG	24 AWG
	Conductor material	SOLID bare copper
	Conductor dimension	0.515±0.02 mm
Insulation	Insulation material	HDPE
	Insulation dimension	1.02±0.05 mm
	Number colour (Strip marking)	1.White/Blue(Strip)&Blue 2.White/Orange(Strip)&Orange 3.White/Green(Strip)&Green 4.White/Brown(Strip)&Brown
Cabling	Twisting lay length	≤30 mm
	Cabling lay length	≤200 mm
Filler	Filler material	N/A
Binder	Binder material	Polyester Tape
Shield	Individual shield & material	N/A
	Primary overall shield & material	AL-Foil
	Secondary overall shield & material	N/A
	Shield coverage	100%
	Drain wire	0.4 mm Solid tinned copper
Outer jacket	Outer jacket material	PVC
	Outer jacket thickness (Nom)	0.5mm
	Overall nominal dimension	6.0±0.3mm
	Outer jacket rip cord	Yes
	Outer jacket colour	Per customer request
Mechanical charnacteristics	Operating temperature range	-20°C ~ +75°C
	Bulk cable weight	40 kg/km
	Max. recommended rulling tension	110 N
	Min. bend radius (install)	8XO.D.
	Outer jacket tensile strength	≥13.8 Mpa
	Outer jacket elongation	≥100%
	Outer jacket aging conditiong	100°C x 168 hrs
	After aging, Tensile strength	≥75% of Unaging
	After aging, elongation	≥50% of Unaging
	Cold bend	No crack (@ -20°C x 4hrs)
Electrical characteristics	Nom. mutual capacitance	≤5.6 nF/100m (@1kHz)
	Pair to ground capacitance unbalance	≤1600 pF/1Km
	Nominal velocity of propagation	65%
	Max. delay skew	45 ns/100m
	Max. conductor DC resistance	93.8 Ω/km (@20°C)
	Max. conductor resistance unbalance	2%(@20°C)
	Min. insulation resistance	5000 MΩ · km
	Max. operating voltage-UL	300 V

Category 5 Enhanced Cables



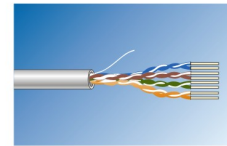
UTP CAT 5 Enhanced 4pairs (XA-05E041)

- 100 Base-T4; 100 Base-TX; 1000 Base-T
- 100 VG-AnyLan
- RS-422, Token Ring
- 155/622 Mbps ATM
- Telephone and Multimedia network
- Digital Video, 100 Mbps TP-PMD



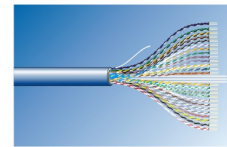
CAT 5 Enhanced FTP 4pairs (XA-05E042)

- 100 Base-T4; 100 Base-TX; 1000 Base-T
- 100 VG-AnyLan
- RS-422, Token Ring
- 155/622 Mbps ATM
- Telephone and Multimedia networks
- Digital Video, 100 Mbps TP-PMD
- Typically used in high EMI/RFI environment



CAT 5 Enhanced UTP stranded 4pairs (XA-15E041)

- 100 Base-T4; 100 Base-TX; 1000 Base-T
- 100 VG-AnyLan
- RS-422, Token Ring
- 155/622 Mbps ATM
- Telephone and Multimedia networks
- 100 Mbps TP-PMD



UTP CAT5 Enhanced 25 pairs (XA-05E251)

- 100 Base-T4; 100 Base-TX; 1000 Base-T
- 100 VG-AnyLan
- RS-422, Token Ring
- 155/622 Mbps ATM
- Telephone and Multimedia network
- Digital Video, 100 Mbps TP-PMD

Category 6 4-Pairs (F/UTP) Cable XA-06042

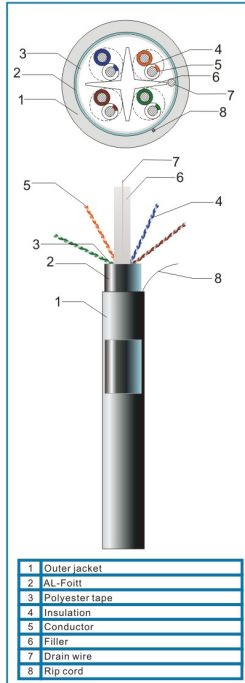
Product Description

Rated temperature	: 75 deg C
Reference Standard	: TIA/EIA 568-C.2 ISO /IEC 11801
Flame Test	: UL CM
Core	: Solid Bare Copper
Insulation	: Color coded Polyethylene
Jacket	: FR PVC
Packaging	: Box/Wooden Reel

Application:

:100 Base – T4/TX
:100 Base AnyLAN
:1000 Base – T/TX
:155Mbps ATM
:622Mbps ATM

PHYSICAL CHARACTERISTICS:

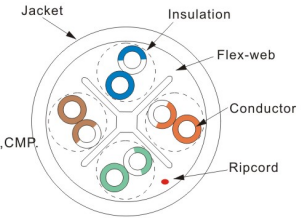


Structure	Construction	F/UTP
	Number of pairs	4 Pair/S
Conductor	AWG	24 AWG
	Conductor material	Solid bare copper
	Conductor dimension	0.53±0.02 mm
Insulation	Insulation material	PE
	Insulation dimension	1.08±0.05 mm
	Number colour (Strip marking)	1.White/Blue(Strip)&Blue 2.White/Orange(Strip)&Orange 3.White/Green(Strip)&Green 4.White/Brown(Strip)&Brown
Cabling	Twisting lay length	≤30 mm
	Cabling lay length	≤200 mm
Filler	Filler material	PE
Binder	Binder material	Polyester Tape
Shield	Individual shield & material	N/A
	Primary overall shield & material	AL-Foil
	Secondary overall shield & material	N/A
	Shield coverage	100%
	Drain wire Nom	0.4 mm Solid tinned copper
Outer jacket	Outer jacket material	PVC
	Outer jacket thickness	0.5mm
	Overall nominal dimension	7.1±0.3mm
	Outer jacket rip cord	Yes
	Outer jacket colour	Per customer request
Mechanical characteristics	Operating temperature range	-20°C ~ +75°C
	Bulk cable weight	49 kg/km
	Max. recommended rulling tension	110 N
	Min. bend radius (Install)	8XO.D.
	Outer jacket tensile strength	≥13.8 Mpa
	Outer jacket elongation	≥100%
	Outer jacket aging condition	100°C x 168 hrs
	After aging, Tensile strength	≥75% of Unaging
	After aging, Elongation	≥50% of Unaging
	Cold bend	No crack (@ -20°Cx 4hrs)
Electrical characteristics	Nom. mutual capacitance	≤5.6 nF/100m (@ 1kHz)
	Pair to ground capacitance unbalance	≤330 pF/1Km
	Nominal velocity of propagation	65%
	Max. delay skew	45 ns/100m
	Max. conductor DC resistance	93.8Ω/km (@20°C)
	Max. conductor resistance unbalance	5%(@20°C)
	Min. insulation resistance	5000 MΩ.km
	Max. operating voltage-UL	300 V

Category 6A U/FTP Cable

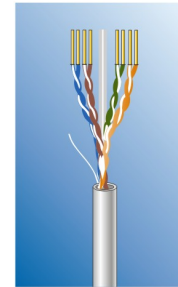
Product Description

Rated temperature: 60 , 75
 PE insulation
 Twisted pairs cabled together
 PVC or LSOH jacket
 " Cross " Shape separator enhance the PSNEXT performance
 Flammability Grade Options: CMX, CM, MP, CMG, MPG, CMR, MPR, CMP.
 Conforms to EIA/TIA 568 B.2-1 Category 6 Standard



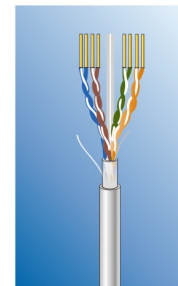
Cable Construction

No. of Pairs	Part Number	Conductor Diameter (mm)	Core Diameter (mm)	Shielding	Nom O.D. (mm)
4	XA-06041	0.53	0.95	optional	5.5
4	XA-06A041	0.53	0.95	optional	5.5



CAT 6 UTP 4pairs (XA-06041)

- 100 Base-T4; 100 Base-TX; 1000 Base-T
- 100 VG-AnyLan
- RS-422, Token Ring
- 155/622 Mbps ATM
- Telephone and Multimedia networks
- Gigabit Ethernet
- AES/EBU, Digital Video



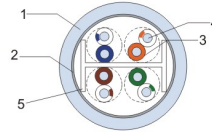
CAT 6A FTP 4 pairs (XA-06A041)

- Foil shield construction to eliminate Alien Cross Talk
- 100 Base T4; 100 Base TX; 1000 Base T, 10G Base T
- Ideal for VOIP and IP Video
- For Gigabit Ethernet and other High-Speed Applications
- Meets EIA/TIA B.2-1 Category 6 & B.2-10 Category 6A Standards

Category 6A 4-Pairs (U/UTP) Cable XA-06A041

Product Description

Rated temperature	: 75 deg C
Reference Standard	: TIA/EIA 568-C.2 ISO /IEC 11801, 61156-5
Flame Test	: UL CM
Core	: Solid Bare Copper
Insulation	: Color coded Polyethylene
Jacket	: FR PVC
Packaging	: Box/Wooden Reel



PHYSICAL CHARACTERISTICS:

Structure	Construction	U/UTP
	Number of pairs	4 Pair/5
Conductor	AWG	23 AWG
	Conductor material	Solid bare copper
	Conductor dimension	0.515±0.02 mm
Insulation	Insulation material	FOAM PE&PE
	Insulation dimension	1.08±0.08 mm
	Number colour (Strip marking)	1.White/Blue(Strip)&Blue 2.White/Orange(Strip)&Orange 3.White/Green(Strip)&Green 4.White/Brown(Strip)&Brown
Cabling	Twisting lay length	±30 mm
	Cabling lay length	±200 mm
Filler	Filler	*H-Shape Filler
Inner jacket	Inner jacket material	FRPE
	Inner jacket nomina thickness	0.3
	Overall nomina dimension	5.6x6.4(±0.5mm)
	Inner jacket colour	White
Outer jacket	Outer jacket material	PVC
	Outer jacket nomina thickness	0.7mm
	Overall nominal dimension	7.05±7.8(±0.5mm)
	Outer jacket rip cord	N/A
	Outer jacket colour	Per customer request
Mechanical charnacteristics	Operating temperature range	-20°C - +75°C
	Bulk cable weight	70 kg/km
	Max. recommended rulling tension	80 N
	Min. bend radius (Install)	8XO.D.
	Outer jacket tensile strength	≥13.8 Mpa
	Outer jacket elongation	≥100%
	Outer jacket aging condition	100°C x 168 hrs
	After aging. Tensile strength	≥75% of Unaging
	After aging. elongation	≥50% of Unaging
	Cold bend	No crack (@ -20°Cx 4hrs)
Electrical characteristics	Nom. mutual capacitance	≤5.6 nF/100m(@1kHz)
	Pair to ground capacitance unbalance	≤330 pF/100m
	Nominal velocity of propagation	65%
	Max. delay skew	45 ns/100m
	Max. conductor DC resistance	93.8Ω/km (@20°C)
	Max. conductor resistance unbalance	5%(@20°C)
	Min. insulation resistance	5000 MΩ.km
	Max. operating voltage-UL	300 V

1	Outer Jacket
2	Inner Jacket
3	Insulation
4	Conductor
5	*H-Shape Filler

APPLICATION :

- 100 Base -T4
- 100 Base -TX
- 100 Base - AnyLAN
- 1000 Base -T
- 1000 Base -TX
- 155 Mbps ATM
- 622 Mbps ATM
- 10G Ethernet

Copper Patch Cords

XA 2 - 4 M U X X E - M T Y Y

NO OF PAIR

STRAIN RELIEF

- M — Molded
- B — W/Boots
- X — W/O Boots

CABLE TYPE

- U — Unshielded
- F — Shielded

LENGTH

GRADE

- 3 — CAT 3
- 5 — CAT 5
- E — CAT 5E
- 6 — CAT 6

COLOR TYPE

- BU —Blue
- BL —Black
- GN —Green
- RD —Red
- WH —White
- YL —Yellow

UNITS

- FT —Feet
- MT —Meter

Cable: 4 pairs, 24AWG, Stranded Unshielded Twisted Pair. UL/ETL, ANSI/TIA/EIA 568A Category 5E or 6. Min 1100 Insertion Life Cycle. Available for six color choice.

Plug: 8P8C, gold plating pins, strain relief, sang-free cap.

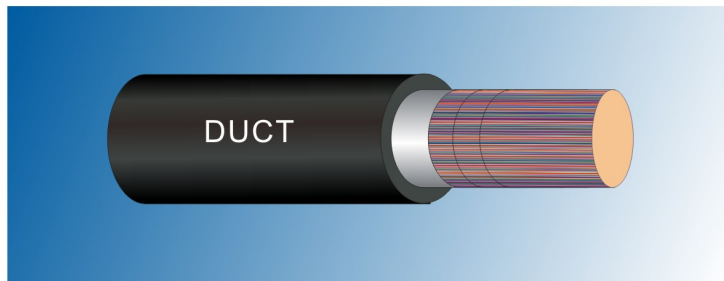
Example: XA2-4BU05E-MTBU
CAT5E UTP Path Cord, 5 meter blue w/Boots



UTP Cables w/boots Molded UTP Cables UTP Cables w/o boots Shielded Cables w/boots

* All copper patch cord are assembled & 100% tested, to offer superior performance

Outdoor Telephone Cable



Details	
1. Copper Conductor	5. Core Wrapping Tape
2. Insulation (Foam-skin)	6. Aluminium Moisture barrier tape
3. Filling Compound(Jelly)	7. Outer Sheath, Black PE
4. Identification Tape	8. Sheath Marking

Part Number

XA-TCC(XX)B (XX) denotes number of pairs (10, 25, 30, 50, 100, 200)

Type/Classification

BELLAN*A/REA PE-39 FILLED ALPETH CABLE

Max. Operating Temp 75 deg C

Conductor Size

22-26 AWG

General Construction

Solid annealed copper conductor with solid HDPE insulation and water blocking compound, over-all shielded with corrugated aluminum tape and polyethylene jacketed.

Use/Application:

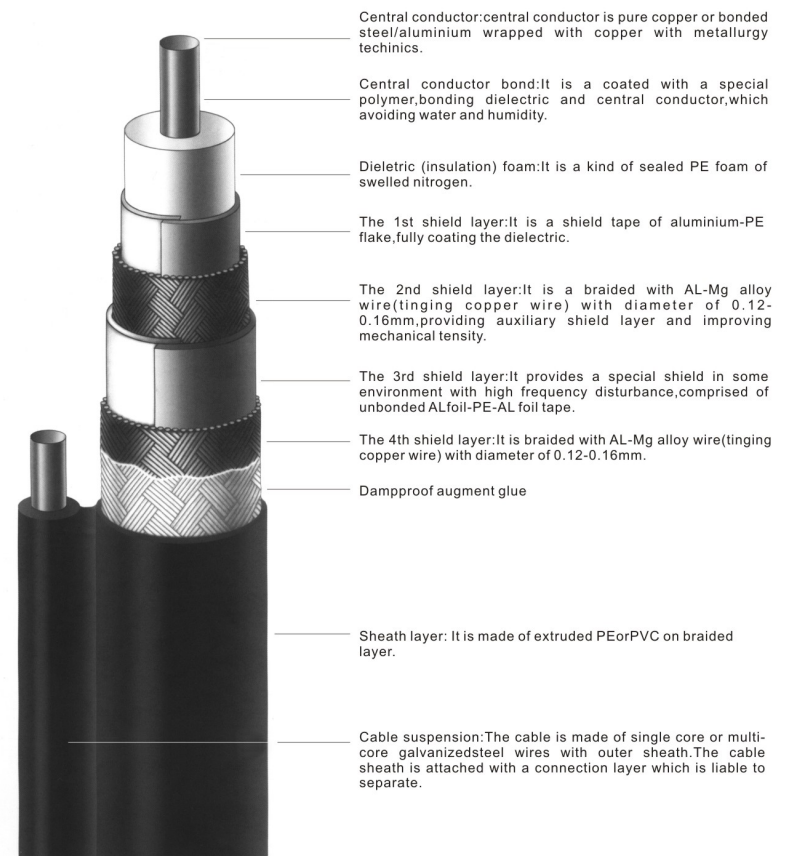
Outdoor direct burial or underground installation where protection against water or water entry is required.

Standard Packing:

In wooden reels. 1,000 meters, 2,000 meters per reel.

Coaxial Cables

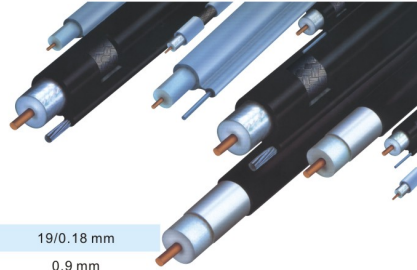
Construction and type



RG 58 Coaxial Cables

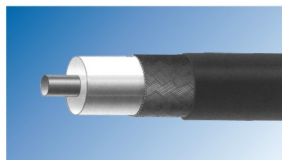
Product Description

Rated Temperature: 80
 Bare solid copper conductor
 LDPE insulation
 Shielded with Aluminum foil
 Bare or tinned copper wire braid, 85% coverage
 PVC or LSOH jacket
 Suitable for 10 Base-2 Application



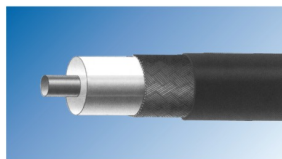
Cable Construction

Stranded Tinned	Construction	19/0.18 mm
Annealed Cu Conductor	Stranded diameter	0.9 mm
Insulation	Material	LDPE
	Thickness	1.02 mm
	Insulation Diameter	2.95±0.10mm
	Color	Natural
Tinned Copper wire	Construction	16/7/0.12 mm
Braiding	Coverage	95%
PVC Jacket (PVC-102-XXXX)	Minimum Thickness	0.66mm
	Outer diameter	5.00±0.15mm
	Color	Black



RG 58 Solid (XA-RG58)

- Used in most radio Frequency and Microwave 50-ohm transmission
- Local Area Network (LAN) Thin Ethernet
- Computer and other instrumentation/control applications.



RG 58 Stranded Tinned Copper (XA-58S)

- Used in most radio Frequency and Microwave 50-ohm transmission
- Local Area Network (LAN) Thin Ethernet
- Computer and other instrumentation/control applications.

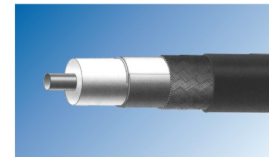
RG 59 Coaxial Cables

Product Description

Rated Temperature: 80
 Solid copper clad steel center conductor
 Foamed PE insulation
 PVC jacket with messenger
 Shielded with Aluminum foil
 Comply with SCTE specification: IPS-SP-001

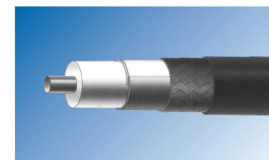
Cable Construction

Copper clad steel	AWG	20
Conductor	Construction	1/0.81 mm
	Conductor diameter	0.81 mm
Insulation	Material	Skin Foamed LDPE
	Insulation Diameter	3.66 mm
	Color	Natural
Bonded Al foil shielding (metal side outwards)	Thickness	0.055 mm
	Width	16 mm
	Overlap	≥25%
Aluminum wire	Construction	16/7/0.16 mm
	Braiding	Coverage
Galvanized Steel Messenger	Diameter	1.3 mm
PVC Jacket	Thickness	0.87 mm
	Nominal diameter	6.1±0.15×9.88±0.15mm
	Color	Per request



RG 59U/95% Braiding (XA-RG59U/95)

- Audio and video cabling systems
- Connection cable for satellite systems
- Point-to-point wiring
- Indoor CATV, MATV, CCTV systems



RG 59U 7/0 .254 Stranded Bared Copper (XA-RG59S)

- Audio and video cabling systems
- Connection cable for satellite systems
- Point-to-point wiring
- Indoor CATV, MATV, CCTV systems

RG 6 Coaxial Cables

Product Description

Rated Temperature: 75
 Solid copper clad center conductor
 PVC jacket
 Skin foamed PE insulation
 Aluminum braided shield with 90% coverage
 Comply with SCTE specification: IPS-SP-001

Cable Construction

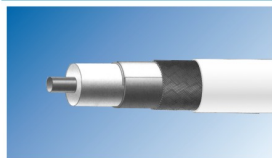
Bare copper	AWG	18
Conductor	Construction	1/1.02 mm
	Conductor diameter	1.02 mm
Insulation	Material	Skin foamed PE
	Insulation Diameter	4.57 mm
	Color	Natural
Bonded Al foil shielding (metal side outwards)	Thickness	0.055 mm
	Width	18 mm
	Overlap	≥25%
Aluminum wire	Construction	16/8/0.16 mm
Braiding	Coverage	≈90%
Copper clad steel messenger	Diameter	1.15 mm
PVC Jacket	Thickness	0.81 mm
	Nominal diameter over jacket*	6.95±0.15mm
	Nominal diameter over messenger	2.7±0.2mm
Color	Per request	

*applicable only if with messenger



RG 6U/61% Braiding (XA-RG6U/61B)

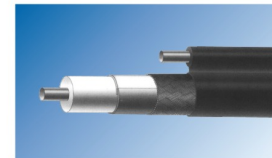
- Audio and video cabling systems
- Connection cable for satellite systems
- Point-to-point wiring
- Indoor CATV, MATV, CCTV systems



RG 6U/90% Braiding (XA-RG6U/90W)

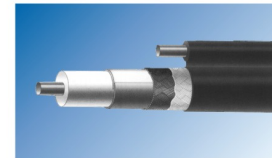
- Audio and video cabling systems
- Connection cable for satellite systems
- Point-to-point wiring
- Indoor CATV, MATV, CCTV systems

RG 6 Coaxial Cables



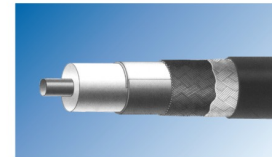
RG 6U/90% Braiding w/ Messenger (XA-RG6U/90M)

- Audio and video cabling systems
- Connection cable for satellite systems
- Point-to-point wiring
- Indoor/outdoor CATV, MATV, CCTV systems



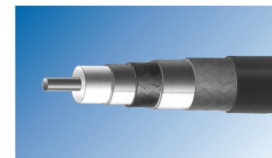
RG 6U/90% Braiding w/ Mess Jelly (XA-RG6U/90MF)

- Audio and video cabling systems
- Connection cable for satellite systems
- Point-to-point wiring
- Indoor/outdoor CATV, MATV, CCTV systems



RG 6U/90% Braiding Jelly (XA-RG6U/90F)

- Audio and video cabling systems
- Connection cable for satellite systems
- Point-to-point wiring
- Indoor/outdoor CATV, MATV, CCTV systems



RG6U/60%/40% Braiding QUAD (XA-RG6U/QUAD)

- Audio and video cabling systems
- Connection cable for satellite systems
- Point-to-point wiring
- Indoor/outdoor CATV, MATV, CCTV systems

RG 11 Coaxial Cables

Product Description

Rated Temperature: 75
 Solid copper clad center conductor
 PVC jacket
 Skin foamed PE insulation
 Aluminum braided shield with 90% coverage
 Comply with SCTE specification: IPS-SP-001

Cable Construction

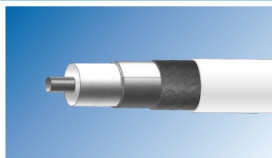
Bare copper	AWG	14
Conductor	Construction	1/1.02 mm
	Conductor diameter	1.02 mm
Insulation	Material	Skin foamed PE
	Insulation Diameter	4.57 mm
Bonded Al foil shielding (metal side outwards)	Color	Natural
	Thickness	0.055 mm
	Width	18 mm
	Overlap	≥25%
Aluminum wire	Construction	16/8/0.16 mm
Braiding	Coverage	≈90%
Copper clad steel messenger	Diameter	1.15 mm
PVC Jacket	Thickness	0.81 mm
	Nominal diameter over jacket*	6.95±0.15mm
	Nominal diameter over messenger	2.7±0.2mm
	Color	Per request

*applicable only if with messenger



RG 11U/61% Braiding (XA-RG11U/61B)

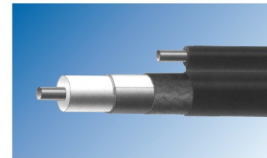
- Audio and video cabling systems
- Connection cable for satellite systems
- Point-to-point wiring
- Indoor CATV, MATV, CCTV systems



RG 11U/90% Braiding (XA-RG11U/90W)

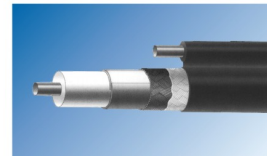
- Audio and video cabling systems
- Connection cable for satellite systems
- Point-to-point wiring
- Indoor CATV, MATV, CCTV systems

RG11 Coaxial Cables



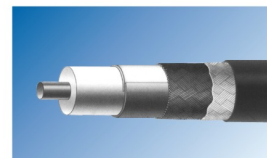
RG 11U/90% Braiding w/ Messenger (XA-RG11U/90M)

- Audio and video cabling systems
- Connection cable for satellite systems
- Point-to-point wiring
- Indoor/outdoor CATV, MATV, CCTV systems



RG 11U/90% Braiding w/ Mess Jelly (XA-RG11U/90MF)

- Audio and video cabling systems
- Connection cable for satellite systems
- Point-to-point wiring
- Indoor/outdoor CATV, MATV, CCTV systems



RG 11U/90% Braiding Jelly (XA-RG11U/90F)

- Audio and video cabling systems
- Connection cable for satellite systems
- Point-to-point wiring
- Indoor/outdoor CATV, MATV, CCTV systems

Other Series Coaxial Cables

Solid R F Coaxial Cable

Type	Center Conductor		Insulation		Braid Shield		Jacket		Nom Imped	Attenuation (100MHZ) dB/km
	Material	No./ Dia (mm)	Material	Outer Dia. (mm)	Material	No./ Dia (mm)	Material	Outer Dia. (mm)		
RG174/U	CCS	7/0.16	LDPE	1.52	TC	16/5/0.10	PVC	2.54±0.15	50±3	259
RG58C/U	BC	19/0.18	LDPE	3.0	TC	16/7/0.12	PVC	4.95±0.15	50±3	174
RG58/U	BC	1/0.81	LDPE	3.0	TC	16/7/0.12	PVC	4.95±0.15	53±3	133
URM70	BC	7/0.18	LDPE	3.3	BC	16/6/0.12	PVC	5.8±0.20	75±3	176
RG59B/U BC/CCS	1/0.58	LDPE	3.7	BC	16/7/0.12	PVC	6.15±0.20	93±3	112	
RG213U	BC	7/0.75	LDPE	7.25	BC	24/5/0.15	PVC	10.3±0.20	50±3	69
10MHZ										
3C-2V	BC	1/0.5	LDPE	3.1	BC	16/7/0.12	PVC	5.4±0.15	75±3	42
5C-2V	BC	1/0.8	LDPE	4.9	BC	16/9/0.14	PVC	7.4±0.15	75±3	27
7C-2V	BC	7/0.405	LDPE	7.3	BC	24/7/0.18	PVC	10.3±0.20	75±3	22
10C-2V	BC	7/0.50	LDPE	8.5	BC	24/9/0.16	PVC	13.0±0.20	75±3	18
3D-2V	BC	7/0.32	LDPE	3.0	BC	16/6/0.12	PVC	5.3±0.15	50±3	46
5D-2V	BC	1/1.40	LDPE	4.8	BC	24/7/0.12	PVC	7.3±0.15	50±3	27
8D-2V	BC	7/0.80	LDPE	7.8	BC	24/8/0.16	PVC	11.1±0.20	50±3	20
10D-2V	BC	1/2.90	LDPE	9.7	BC	24/10/0.20	PVC	13.1±0.20	50±3	14

Composite/Multireach Coaxial Cable

Physical Dimensions						
Type	Construction	Inner Conductor No./Dia(mm)	Insulation (mm)	Braid Coverage	Jacket (mm)	Overall Dimension (mm)
Rg6 Coaxial Cable	Rg6 Coaxial Cable	1/1.0BC	4.8	45%	7.2	126×72×43
+Voice Pairs Cable 2×2×1/0.5	Voice Pairs Cable 2×2×1/0.5	1/0.5BC	0.9	N/A	4.3	

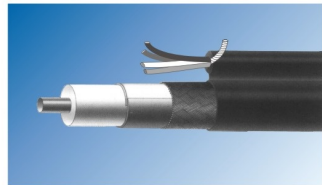
Electrical Characteristics

Voice Pairs Cable

Rated Capacitance (pF/km)	52
conductor DC Resistance Unbalance(Max.)	5%
Nominal DC Resistance(U/km)	95
Far End Crosstalk Ratio at 150KHZ(dB/km)	>68

RG6 Coaxial Cable

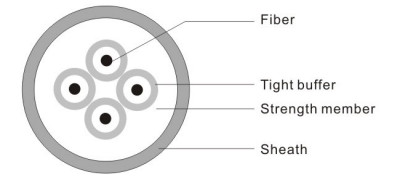
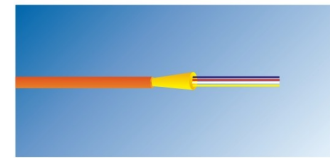
Rated Characteristic Impedance(Ω)	75	
Rated Velocity of Propagation	80%	
Rated Capacitance(pF/m)	55.8	
Max. Attenuation@20 (dB/100m)	50MHZ	4.7
	200MHZ	9.0
	550MHZ	15.8
	750MHZ	18.4
	800MHZ	19.0
Min. Return Wave Loss (dB)	VHF	20
	UHF	18
Min. Shielding Attenuation (dB)	50MHZ	60
	200MHZ	70
	800MHZ	70



Fiber Optic Distribution Cable

Product Description

PVC tight buffered optical fiber, Riser type PVC Jacket
 Meets NEC riser (OFNR) safety standards
 Flexible thermoplastic jacket provides excellent handling characteristics
 Fibers & cable sub-units are color coded for easy identification
 Length markings in meters for easy determination of cable length
 Full dielectric construction, no grounding required



Cable Construction

Fiber Count	Part Number	Outside Diameter (mm)	Weight (kg/km)	Minimum Bend Radius (cm)		Maximum Tensile Load (N)
				Installation	Long Term	
4	XA-FD4C	5.08	24	7.6	5.1	801
6	XA-FD6C	5.59	28	8.4	5.6	1201
8	XA-FD8C	5.97	33	8.9	6.1	1201
12	XA-FD12C	6.48	40	9.6	6.6	1334
24	XA-FD24C	12.60	124	18.8	12.7	4270
36	XA-FD36C	16.36	204	24.6	16.5	6405
48	XA-FD48C	15.93	195	23.9	16.0	4203
72	XA-FD72C	19.10	290	28.6	19.1	6005

Single Mode Fiber with the same construction also available *

Fiber Optic Cable 4-Core, 62.5/125 Multimode (XA-FD4C)

- Telecommunication, CATV
- Fiber to the home
- LAN, WAN
- Industrial Control & Metering
- Intra-building cabling, Horizontal cabling

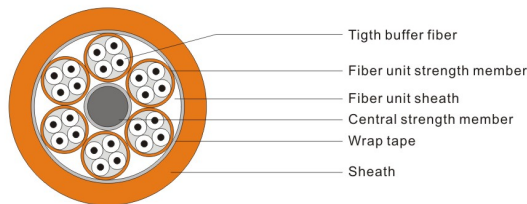
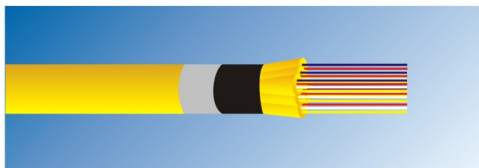
Fiber Optic Cable 6-Core, 62.5/125 Multimode (XA-FD6C)

- Telecommunication, CATV
- Fiber to the home
- LAN, WAN
- Industrial Control & Metering
- Intra-building cabling, Horizontal cabling

Fiber Optic Distribution Cable

Product Description

PVC tight buffered optical fiber, Riser type PVC Jacket
 Meets NEC riser (OFNR) safety standards
 Flexible thermoplastic jacket provides excellent handling characteristics
 Fibers & cable sub-units are color coded for easy identification
 Length markings in meters for easy determination of cable length
 Full dielectric construction, no grounding required



Fiber Optic Cable 12-Core, 62.5/125 Multimode (XA-FD12C)

- Telecommunication, CATV
- Fiber to the home
- LAN, WAN
- Industrial Control & Metering
- Intra-building cabling, Horizontal cabling

Fiber Optic Cable 24-Core 62.5/125 Indoor (XA-FD24C)

- Telecommunication, CATV
- Fiber to the home
- LAN, WAN
- Video transmission
- Intra-building cabling, Horizontal cabling

Fiber Optic Distribution Cable

Fiber Optic Cable 36-Core 62.5/125 Indoor (XA-FD36C)

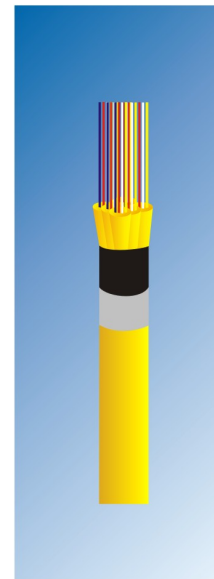
- Telecommunication, CATV
- Fiber to the home
- LAN, WAN
- Video transmission
- Intra-building cabling, Horizontal cabling

Fiber Optic Cable 48-Core 62.5/125 Indoor (XA-FD48C)

- Telecommunication, CATV
- Fiber to the home
- LAN, WAN
- Video transmission
- Intra-building cabling, Horizontal cabling

Fiber Optic Cable 72-Core 62.5/125 Indoor (XA-FD72C)

- Telecommunication, CATV
- Fiber to the home
- LAN, WAN
- Video transmission
- Intra-building cabling, Horizontal cabling



Central Tube Outdoor Armored Cable

Product Description

Available with singlemode and multimode and sizes from 4-12 fiber cores
 PE jacket material
 Fully water-blocked
 Fibers & cable sub-units are color coded for easy identification
 Length markings in meters for easy determination of cable length



Cable Construction

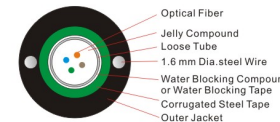
Fiber Count	Part Number	Outside Diameter (mm)	Weight (kg/km)	Minimum Bend Radius (cm)		Maximum Tensile Load (N)
				Installation	Long Term	
4	XA-FO4C	10.41	108	20.8	15.6	2700
6	XA-FO6C	5.59	108	20.8	15.6	2700
8	XA-FO8C	5.97	108	20.8	15.6	2700
12	XA-FO12C	6.48	108	20.8	15.6	2700

COLOR COMPOSITION					
NUMBER	COLOR		NUMBER	COLOR	
	FIBER	TUBE		FIBER	TUBE
1	BLUE ●	WHITE ○	7	RED ●	WHITE ○
2	ORANGE ●		8	BLACK ●	
3	GREEN ●		9	YELLOW ●	
4	BROWN ●		10	VIOLET ●	
5	GREY ●		11	PINK ●	
6	WHITE ○		12	AQUA ●	

TABLE: 2~12CORE

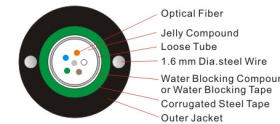
ITEM	SPECIFICATION	1.5KN TYPE	REMARKS
CABLE CORE	2~12Fibers	2.8mm	
CORRUGATED STEEL TAPE	0.25mm Thickness	4.4mm	
OUTER JACKET	MDPE	10.6mm	
MINIMUM BEND RADIUS	STATIC DYNAMIC	106mm(10xOuter Dia.) 212mm(20xOuter Dia.)	
MAXIMUM PULLING TENSION	3000N		
CRUSH RESISTANCE	3000N/100mm		
RECOMMENDED TEMP.RANGE	-40℃ ~+70℃		
APPROXIMATED CABLE WEIGHT	127kg/km		

Central Tube Outdoor Armored Cable



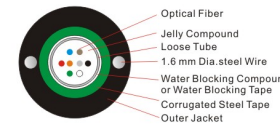
Fiber Optic Cable 4-Core, Single central loose tube armored(XA-FO4C)

- Lashed Aerial
- Direct Burial
- Drop Cable
- Campus OSP Backbone
- Inter-building cabling



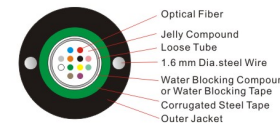
Fiber Optic Cable 6-Core, Single central loose tube armored(XA-FO6C)

- Lashed Aerial
- Direct Burial
- Drop Cable
- Campus OSP Backbone
- Inter-building cabling



Fiber Optic Cable 8-Core, Single central loose tube armored(XA-FO8C)

- Lashed Aerial
- Direct Burial
- Drop Cable
- Campus OSP Backbone
- Inter-building cabling



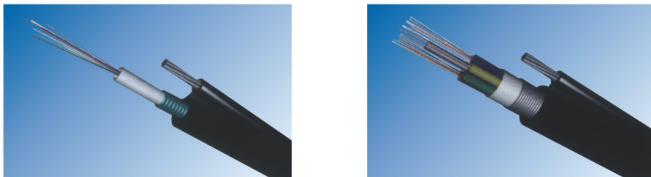
Fiber Optic Cable 12-Core, Single central loose tube armored(XA-FO12C)

- Lashed Aerial
- Direct Burial
- Drop Cable
- Campus OSP Backbone
- Inter-building cabling

Steel Messengered Loose Tube-Aerial Cable

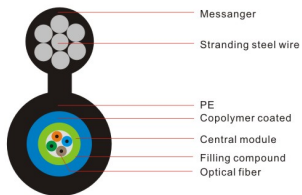
Product Description

Available in singlemode and multimode sizes from 4-36 fiber cores. Gel filled. Optical fiber cable with metallic central strength member and steel messenger wire. Figure 8 messengered type suitable for overhead installation as pole to pole or pole to premises. High strength, tracking-resistant sheath. Length markings in meters for easy determination of length.



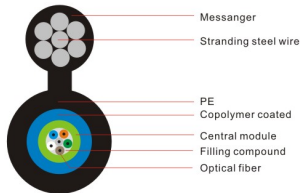
Cable Construction

Fiber Count	Part Number	Outside Diameter		Weight (kg/km)	Max. Messenger Load (N)
		Minor Inch	Major Inch		
4	XA-FA4C	.530	1.00	366	17,750
6	XA-FA6C	.530	1.00	366	17,750
8	XA-FA8C	.530	1.00	366	17,750
12	XA-FA12C	.530	1.00	366	17,750
24	XA-FA24C	.530	1.00	366	17,750
36	XA-FA36C	.530	1.00	366	17,750



Fiber Optic Cable 4-Core, Steel Messengered Aerial(XA-FA4C)

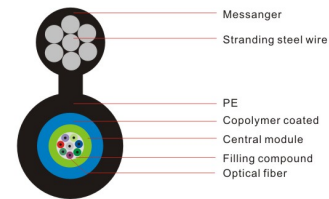
- Aerial application between poles
- Long-haul communication systems
- Junction communication systems
- Inter-building cabling



Fiber Optic Cable 6-Core, Steel Messengered Aerial(XA-FA6C)

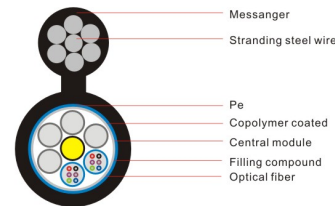
- Aerial application between poles
- Long-haul communication systems
- Junction communication systems
- Inter-building cabling

Steel Messengered Loose Tube-Aerial Cable



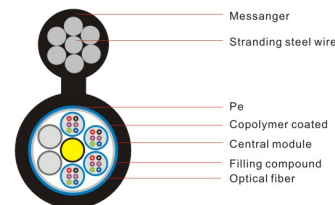
Fiber Optic Cable 8-Core, Steel Messengered Aerial(XA-F84C)

- Aerial application between poles
- Long-haul communication systems
- Junction communication systems
- Inter-building cabling



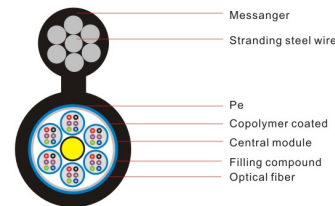
Fiber Optic Cable 12-Core, Steel Messengered Aerial(XA-FA12C)

- Aerial application between poles
- Long-haul communication systems
- Junction communication systems
- Inter-building cabling



Fiber Optic Cable 24-Core, Steel Messengered Aerial(XA-FA24C)

- Aerial application between poles
- Long-haul communication systems
- Junction communication systems
- Inter-building cabling



Fiber Optic Cable 36-Core, Steel Messengered Aerial(XA-FA36C)

- Aerial application between poles
- Long-haul communication systems
- Junction communication systems
- Inter-building cabling

Aerial&Conduit GYXTS Optical Fiber Cable

Product Description

Low dispersion and attenuation
 Proper design,precise control for fiber excess length render the cable excellent mechanical and enviromental properties
 The armoring of corrugated steel tape gives the cable excellent moisture resistant and crush resistant properties.
 With small cable diameter,light cable weight,easy to lay

multimode& Available in singlemode

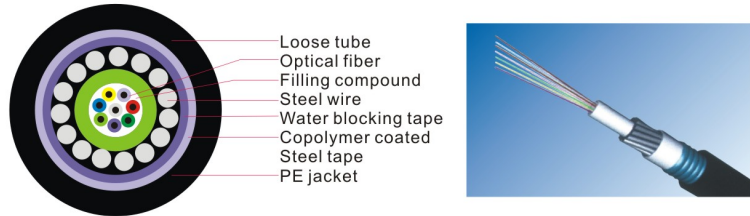
Application:

Rural communication,local trunk line,CATV&computer networks system

Installation method:

Aerial,Duct and direct burial

Cable Construction



Fiber Count	Part Number	Cable dia (mm)	Cable net weight (Kg/km)	Min.bending radius (mm)		Min.tensile strength(N)		Min.crush pressure N/100mm	
				Static state	Dynamic state	Short term	Long term	Short term	Long term
2-12	XA-GYXTS-2-12	10.9	174	110	220	1500	600	1000	300

Aerial&Conduit GYXTA Optical Fiber Cable

Product Description

Low dispersion and attenuation
 Proper design,precise control for fiber excess length and distinct stranding process render the cable excellent mechanical and enviromental properties
 The armoring of corrugated steel tape gives the cable excellent moisture resistant and crush resistant properties
 With small cable diameter,light cable weight,easy to lay

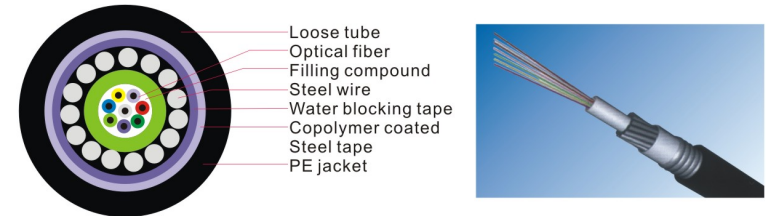
Application:

Rural communication,local trunk line,CATV&computer networks system

Installation method:

Aerial,Duct and direct burial

Cable Construction



Fiber Count	Part Number	Cable dia (mm)	Cable net weight (Kg/km)	Min.bending radius (mm)		Min.tensile strength(N)		Min.crush pressure N/100mm	
				Static state	Dynamic state	Short term	Long term	Short term	Long term
2-12	XA-GYXTA-2-12	10.9	153	110	220	1500	600	1000	300

Aerial&Conduit GYTS Optical Fiber Cable

Product Description

Low dispersion and attenuation
 Proper design, precise control for fiber excess length and distinct stranding process render the cable excellent mechanical and environmental properties
 The armoring of corrugated steel tape gives the cable excellent moisture resistant and crush resistant properties
 With small cable diameter, light cable weight, easy to lay

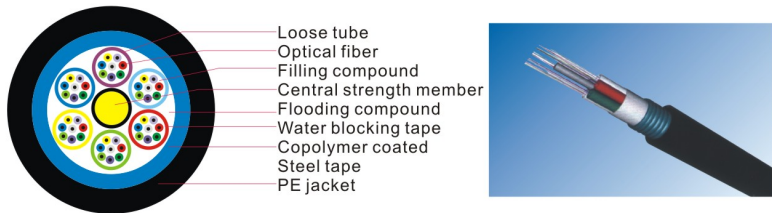
Application:

Long-distance communication, local trunk line, CATV & computer networks system

Installation method:

Duct and direct burial

Cable Construction



Fiber Count	Part Number	Cable dia (mm)	Cable net weight (Kg/km)	Min. bending radius (mm)		Min. tensile strength(N)		Min. crush pressure N/100mm	
				Static state	Dynamic state	Short term	Long term	Short term	Long term
2-30	XA-GYTS-2-30	11.0	123	110	220	1500	600	1000	300
32-36	XA-GYTS-32-36	11.6	144	120	240	1500	600	1000	300
38-60	XA-GYTS-38-60	12.3	155	130	260	1500	600	1000	300
62-72	XA-GYTS-62-72	13.1	190	140	280	1500	600	1000	300
74-84	XA-GYTS-74-84	13.9	208	140	280	1700	600	1000	300
86-96	XA-GYTS-86-96	14.7	228	150	300	1800	600	1000	300
98-108	XA-GYTS-98-108	15.5	247	160	320	2000	600	1000	300
110-120	XA-GYTS-110-120	16.3	268	170	340	2200	600	1000	300
122-132	XA-GYTS-122-132	17.1	290	180	360	2300	600	1000	300
134-144	XA-GYTS-134-144	17.9	313	180	360	2500	600	1000	300

Aerial&Conduit GYTA Optical Fiber Cable

Product Description

Low dispersion and attenuation
 Proper design, precise control for fiber excess length and distinct stranding process render the cable excellent mechanical and environmental properties
 Aluminum-PE jacket with high moisture resistant properties
 With small cable diameter, light cable weight, easy to lay

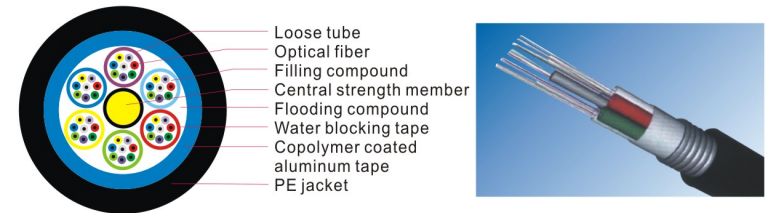
Application:

Long-distance communication, local trunk line, CATV & computer networks system

Installation method:

Duct and direct burial

Cable Construction



Fiber Count	Part Number	Cable dia (mm)	Cable net weight (Kg/km)	Min. bending radius (mm)		Min. tensile strength(N)		Min. crush pressure N/100mm	
				Static state	Dynamic state	Short term	Long term	Short term	Long term
2-30	XA-GYTA-2-30	11.0	106	110	220	1500	600	1000	300
32-36	XA-GYTA-32-36	11.6	126	120	240	1500	600	1000	300
38-60	XA-GYTA-38-60	12.3	135	130	260	1500	600	1000	300
62-72	XA-GYTA-62-72	13.1	168	140	280	1500	600	1000	300
74-84	XA-GYTA-74-84	13.9	184	140	280	1500	600	1000	300
86-96	XA-GYTA-86-96	14.7	202	150	300	1600	600	1000	300
98-108	XA-GYTA-98-108	15.5	220	160	320	1800	600	1000	300
110-120	XA-GYTA-110-120	16.3	239	170	340	1900	600	1000	300
122-132	XA-GYTA-122-132	17.1	259	180	360	2100	600	1000	300
134-144	XA-GYTA-134-144	17.9	280	180	360	2200	600	1000	300

Aerial&Conduit GYTA63 Optical Fiber Cable

Product Description

Low dispersion and attenuation
 Proper design, precise control for fiber excess length and distinct stranding process render the cable excellent mechanical and environmental properties
 Double-jacket structure gives the cable high moisture resistant & crush resistant characteristic
 With small cable diameter, light cable weight, easy to lay

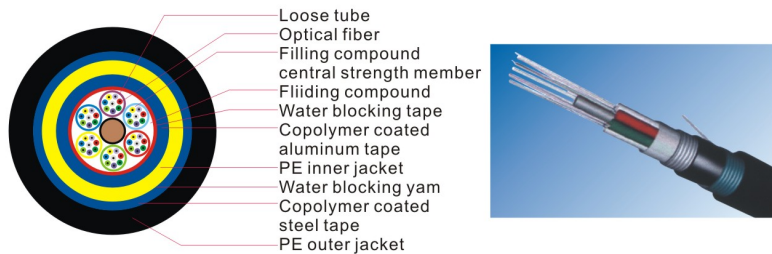
Application:

Long-distance communication, local trunk line, CATV & computer networks system

Installation method:

Aerial or Duct

Cable Construction



Fiber Count	Part Number	Cable dia (mm)	Cable net weight (Kg/km)	Min. bending radius (mm)		Min. tensile strength(N)		Min. crush pressure N/100mm	
				Static state	Dynamic state	Short term	Long term	Short term	Long term
2-36	XA-GYTA-63-2-36	15.5	235	160	320	3000	1000	3000	1000
38-48	XA-GYTA-63-38-48	16.1	255	170	340	3000	1000	3000	1000
50-72	XA-GYTA-63-50-72	17.0	288	170	340	3000	1000	3000	1000
74-84	XA-GYTA-63-74-84	17.8	311	180	360	3000	1000	3000	1000
86-96	XA-GYTA-63-86-96	18.6	335	190	380	3000	1000	3000	1000
98-108	XA-GYTA-63-98-108	19.4	358	200	400	3000	1000	3000	1000
110-120	XA-GYTA-63-110-120	20.6	367	210	420	3000	1000	3000	1000
122-132	XA-GYTA-63-122-132	21.4	422	220	440	3000	1000	3000	1000
134-144	XA-GYTA-63-134-144	22.2	451	230	460	3000	1000	3000	1000

Direct Buried GYTA53 Optical Fiber Cable

Product Description

Low dispersion and attenuation
 Proper design, precise control for fiber excess length and distinct stranding process render the cable excellent mechanical and environmental properties
 Double-jacket structure gives the cable high moisture resistant & crush resistant characteristic
 With small cable diameter, light cable weight, easy to lay

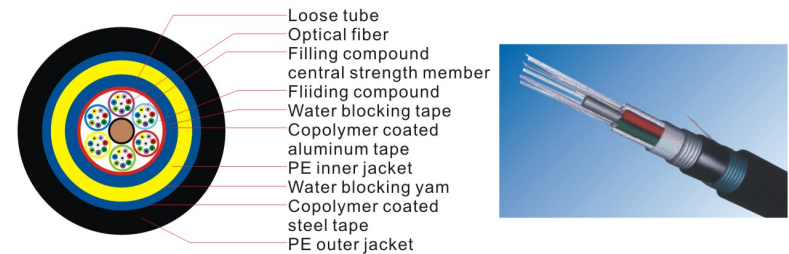
Application:

Long-distance communication, local trunk line, CATV & computer networks system

Installation method:

Aerial or Duct

Cable Construction



Fiber Count	Part Number	Cable Dia (mm)	Cable net weight (Kg/km)	Min. bending radius (mm)		Min. tensile strength(N)		Min. crush pressure N/100mm	
				Static state	Dynamic state	Short term	Long term	Short term	Long term
2-36	XA-GYTA-53-2-36	15.5	235	160	320	3000	1000	3000	1000
38-48	XA-GYTA-53-38-48	16.1	255	170	340	3000	1000	3000	1000
50-72	XA-GYTA-53-50-72	17.0	288	170	340	3000	1000	3000	1000
74-84	XA-GYTA-53-74-84	17.8	311	180	360	3000	1000	3000	1000
86-96	XA-GYTA-53-86-96	18.6	335	190	380	3000	1000	3000	1000
98-108	XA-GYTA-53-98-108	19.4	358	200	400	3000	1000	3000	1000
110-120	XA-GYTA-53-110-120	20.6	367	210	420	3000	1000	3000	1000
122-132	XA-GYTA-53-122-132	21.4	422	220	440	3000	1000	3000	1000
134-144	XA-GYTA-53-134-144	22.2	451	230	460	3000	1000	3000	1000

Direct Buried&Under-water GYTA33 Optical Fiber Cable

Product Description

Low dispersion and attenuation
 Proper design, precise control for fiber excess length and distinct stranding process render the cable excellent mechanical and environmental properties
 The armoring of steel wire double-jacket structure makes cable to have excellent tensile strength and high water-proof and crush resistant properties
 With small cable diameter, light cable weight, easy to lay

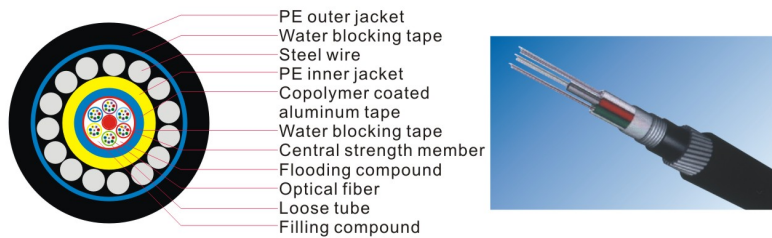
Application:

Long-distance communication, local trunk line, CATV & computer networks system

Installation method:

Aerial or Duct

Cable Construction



Fiber Count	Part Number	Cable dia (mm)	Cable net weight (Kg/km)	Min. bending radius (mm)		Min. tensile strength(N)		Min. crush pressure N/100mm	
				Static state	Dynamic state	Short term	Long term	Short term	Long term
2-30	XA-GYTA33-2-30	15.9	371	160	320	3000	1000	3000	1000
32-36	XA-GYTA33-32-36	16.5	406	170	340	3000	1000	3000	1000
38-60	XA-GYTA33-38-60	17.2	431	170	340	3000	1000	3000	1000
62-72	XA-GYTA33-62-72	18.2	515	180	360	3000	1000	3000	1000
74-84	XA-GYTA33-74-84	19.2	581	190	380	3000	1000	3000	1000
86-96	XA-GYTA33-86-96	20.2	648	200	400	3000	1000	3000	1000
98-108	XA-GYTA33-98-108	21.0	691	210	420	3000	1000	3000	1000
110-120	XA-GYTA33-110-120	22.0	777	220	440	3000	1000	3000	1000
122-132	XA-GYTA33-122-132	23.0	855	230	460	3000	1000	3000	1000
134-144	XA-GYTA33-134-144	24.0	934	240	480	3000	1000	3000	1000

FTY Optical Fiber Cable

Product Description

Low dispersion and attenuation
 Proper design, precise control for fiber excess length and distinct stranding process render the cable excellent mechanical and environmental properties
 With good anti-electromagnetism ability
 With small cable diameter, light cable weight, easy to lay

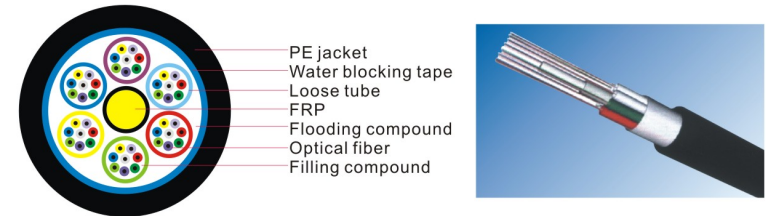
Application:

In the environment with strong electromagnetic interference and the place where thunder frequent happens

Installation method:

Aerial or Duct

Cable Construction



Fiber Count	Part Number	Cable dia (mm)	Cable net weight (Kg/km)	Min. bending radius (mm)		Min. tensile strength(N)		Min. crush pressure N/100mm	
				Static state	Dynamic state	Short term	Long term	Short term	Long term
2-42	XA-GYFTY-2-42	11.5	106	110	240	1500	600	1000	300
44-48	XA-GYFTY-44-48	11.9	115	120	240	1500	600	1000	300
50-56	XA-GYFTY-50-56	11.9	112	120	240	1500	600	1000	300
58-84	XA-GYFTY-50-56	12.9	134	130	260	1500	600	1000	300
86-96	XA-GYFTY-86-96	13.7	155	140	280	1500	600	1000	300
98-108	XA-GYFTY-98-108	14.5	179	150	300	1500	600	1000	300
110-120	XA-GYFTY-110-120	15.3	204	160	320	1600	600	1000	300
122-132	XA-GYFTY-122-132	16.1	232	170	340	1800	600	1000	300
134-144	XA-GYFTY-134-144	16.9	262	170	340	1900	600	1000	300

Aerial&Conduit Optical GYDXTW Optical Fiber Cable

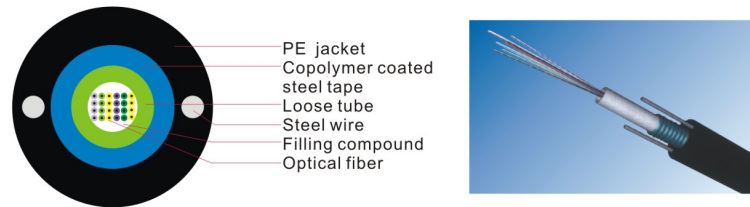
Product Description

Low dispersion and attenuation
 Proper design, precise control for fiber excess length and distinct stranding process render the cable excellent mechanical and environmental properties
 The armoring of corrugated steel tape gives the cable excellent moisture resistant and crush resistant properties
 With small cable diameter, light cable weight, easy to lay, large fiber count, ribbon, connection, saving the cost of engineering

Application:

Access network, local trunk line

Cable Construction



Fiber Count	Part Number	Cable dia (mm)	Cable net weight (Kg/km)	Min. bending radius (mm)		Min. tensile strength(N)		Min. crush pressure N/100mm	
				Static state	Dynamic state	Short term	Long term	Short term	Long term
72	XA-GYDXTW-72	14.3	202	150	300	1600	600	1000	300
96	XA-GYDXTW-96	14.8	210	150	300	1700	600	1000	300
144	XA-GYDXTW-144	16.2	245	170	340	2000	600	1000	300
216	XA-GYDXTW-216	19.4	332	200	400	2700	600	1000	300
288	XA-GYDXTW-288	19.9	356	200	400	2800	600	1000	300

Aerial&Conduit Ribbon GYDTS Optical Fiber Cable

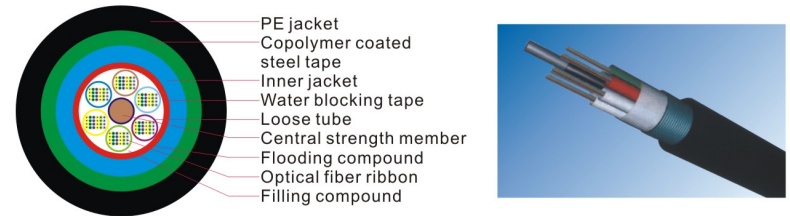
Product Description

Low dispersion and attenuation
 Proper design, precise control for fiber excess length and distinct stranding process render the cable excellent mechanical and environmental properties
 The armoring of corrugated steel tape gives the cable excellent moisture resistant and crush resistant properties
 With small cable diameter, light cable weight, easy to lay, large fiber count, ribbon, connection, saving the cost of engineering

Application:

Access network, local trunk line

Cable Construction



Fiber Count	Part Number	Cable dia (mm)	Cable net weight (Kg/km)	Min. bending radius (mm)		Min. tensile strength(N)		Min. crush pressure N/100mm	
				Static state	Dynamic state	Short term	Long term	Short term	Long term
72	XA-GYDTS-72	14.3	202	150	300	1600	600	1000	300
96	XA-GYDTS-96	14.8	210	150	300	1700	600	1000	300
144	XA-GYDTS-144	16.2	245	170	340	2000	600	1000	300
216	XA-GYDTS-216	19.4	332	200	400	2700	600	1000	300
288	XA-GYDTS-288	19.9	356	200	400	2800	600	1000	300

Aerial&Conduit Ribbon GYDTA Optical Fiber Cable

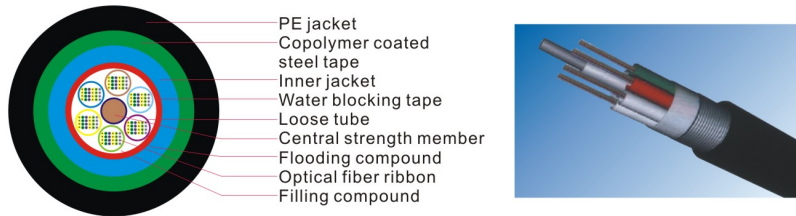
Product Description

Low dispersion and attenuation
 Proper design, precise control for fiber excess length and distinct stranding process render the cable excellent mechanical and environmental properties
 Aluminium-PE jacket with high moisture resistant properties
 With small cable diameter, light cable weight, easy to lay, large fiber count, ribbon, connection, saving the cost of engineering

Application:

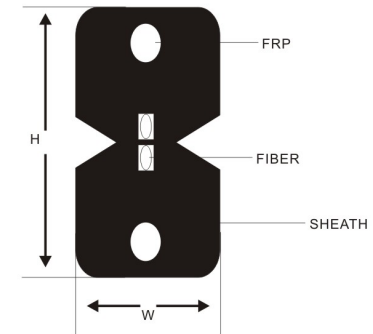
Access network, local trunk line

Cable Construction



Fiber Count	Part Number	Cable dia (mm)	Cable net weight (Kg/km)	Min. bending radius (mm)		Min. tensile strength(N)		Min. crush pressure N/100mm	
				Static state	Dynamic state	Short term	Long term	Short term	Long term
96	XA-GYDTA-96	15.9	236	160	320	1900	600	1000	300
144	XA-GYDTA-144	17.1	271	180	360	2200	600	1000	300
216	XA-GYDTA-216	19.2	330	200	400	2600	600	1000	300
288	XA-GYDTA-288	22.6	418	230	460	3000	600	1000	300
384	XA-GYDTA-384	22.8	436	230	460	3000	600	1000	300

Fiber To The Home Series



Indoor Cable, 1-2 Fiber

- Cable Diameter: Approx 2.0 x 1.6 mm
- Fiber Reinforced Polymer (FRP) Plastic strength member
- LSZH Flame retardant Jacket
- None jelly-filled
- 1-2 core Single mode Fiber
- ITU-G.657 compliant
- Jacket Color Available: Black/White
- Cable shall be installed in a congested conduit by pushing or pulling method.

Fiber To The Home Series

Product Features :

The FTTH Indoor cable is light, soft and easy to bend. It is suitable for any ways of FTTH installation. And it also provides a smaller bending radius while using G.657 or G.652 of fiber. LSZH outer sheath.

Technical Specifications:

Item	Technology parameter		
	9/125 (G657)	9/125 (G657)	9/125 (G652)
Fiber type	9/125 (G657)	9/125 (G657)	9/125 (G652)
Short tension	80 N	80 N	200 N
Short crush	1000 N/100mm	1000 N/100mm	1000 N/100mm
Optical fiber cores	1-2 cores		
Cable weight	9.6 Kg/km		
Fiber color	Nature		
Sheath color	Black/White		
Sheath material	LSZH		
Min. bending radius	10(static) 25(dynamic) mm		
Attenuation	≤ 0.4 at 1310nm, ≤ 0.3 at 1550nm dB/km		
Operation temperature	-20~ +60 °C		

Fiber Optic Splice & Termination Box

Fiber Optic Splice & Termination Box

This product is widely used in the city and country cable network, the data and graph transfer system ,the CATV wired TV series .It is made of coldrolled steel sheets by electrostatic plastic spraying ,and has proper structure and neatly-looking.

Its ports can be replaced according to the practical engineering requirements.The panel of this product,on which adapter is installed can be replaced optionally by FC,SC,ST,LC.....,and it is also suitable for both ribbon optical fiber cable and common optical fiber cable .

Cable Terminal Box



Use:desktop,wall-hang
XA-FPW801 is provided with 2ports, 1 port can hold 2 pcs of fiber cables at the same time, while another port is for 1 pcs of fiber cable, please choose right pigtail fixer
Color:ivory

PART NUMBER	DESCRIPTION
XA-FPW801	12 Cores

Wall Mount Panel



Use:wall-hang
4,6 or 8 hole fiber optic wall mount termination box
Color:ivory, black

PART NUMBER	DESCRIPTION
XA-FPMM-xx*	24 Cores
XA-FPMM-xx*	32 Cores
XA-FPMM-xx*	48 Cores

*xx=SC simplex, SC duplex, ST, FC, LC simplex, LC duplex adaptor

Cable Terminal Box



Use:wall-hang
4,6 or 8 hole fiber optic wall mount termination box
Color:ivory, black

PART NUMBER	DESCRIPTION
XA-FPW002-xx*	24 Cores
XA-FPW002-xx*	32 Cores
XA-FPW002-xx*	48 Cores

*xx=SC simplex, SC duplex, ST, FC, LC simplex, LC duplex adaptor

Fiber Optic Splice & Termination Box



Cable Terminal Box

Use: wall-hang
24, 48 or 96 port fiber optic wall mount termination box
Color: ivory, black

PART NUMBER	DESCRIPTION
XA-FPW00324-xx*	24 Cores
XA-FPW00348-xx*	32 Cores
XA-FPW00396-xx*	48 Cores

*xx=SC simplex, SC duplex, ST, FC, LC simplex, LC duplex adaptor

Fiber Optic Patch Panel

Use: rack mount type
3 or 6 hole fiber patch panel, include cable management with extra space in front
Color: ivory, black



PART NUMBER	DESCRIPTION
XA-FP3H1U01-xx*	24 Cores
XA-FP6H2U01-xx*	48 Cores

*xx=SC simplex, SC duplex, ST, FC, LC simplex, LC duplex adaptor

Fiber Optic Patch Panel

Fiber Optic Patch Panel
Use: rack mount type
3 or 6 hole fiber patch panel, include cable management
Color: ivory, black



PART NUMBER	DESCRIPTION
XA-FPR002-xx*	24 Cores
XA-FPR002-xx*	32 Cores
XA-FPR002-xx*	48 Cores

*xx=SC simplex, SC duplex, ST, FC, LC simplex, LC duplex adaptor

Fiber Optic Patch Panel

Fiber Optic Patch Panel
Use: rack mount type, pull out
12, 24, 48 or 96 port fiber optic patch panel, include cable management
Color: ivory, black



PART NUMBER	DESCRIPTION
XA-PP121U03-xx*	24 Cores
XA-PP241U03-xx*	32 Cores
XA-PPW482U03-xx*	48 Cores
XA-PPW962U03-xx*	96 Cores

*xx=SC simplex, SC duplex, ST, FC, LC simplex, LC duplex adaptor

Fiber Optic Splice & Termination Box



Cable Terminal Box

Use: rack mount type
6 or 12 plastic hole fiber patch panel, include cable management with extra space in front
Color: ivory, black

PART NUMBER	DESCRIPTION
XA-FP241U004-xx*	24 Cores
XA-FP482U004-xx*	48 Cores

*xx=SC simplex, SC duplex, ST, FC, LC simplex, LC duplex adaptor

Fiber Optic Patch Panel

Use: rack mount type
3, 6 or 12 plastic hole fiber patch panel, include cable management
Color: ivory, black



PART NUMBER	DESCRIPTION
XA-FP-XX-YY	12 Cores
XA-FP-XX-YY	24 Cores
XA-FP-XX-YY	48 Cores

xx=12, 24, 36, 48 ; yy=SC, ST, FC, LC

Fiber Optic Patch Panel

Use: rack mount type
12, 24, 48 or 96 port fiber patch panel, include cable management with extra space in front
Color: ivory, black



PART NUMBER	DESCRIPTION
XA-FP121U006-xx*	12 Cores
XA-FP241U006-xx*	24 Cores
XA-FP482U006-xx*	48 Cores

*xx=SC simplex, SC duplex, ST, FC, LC simplex, LC duplex adaptor

Fiber Optic Patch Cord

X A 6 - 6 2 0 X X M - 0 0 Y Y

FIBER TYPE

- 5 — 50um
- 6 — 62.5um
- 7 — SM

FIBER COUNT

- 1 — Simplex
- 2 — Duplex
- P — Pigtails

POLISH

- 0 — PC
- 1 — APC

LENGTH

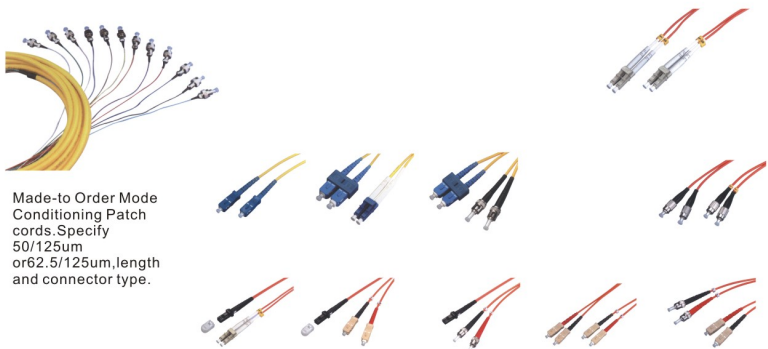
- UNITS**
 F — Feet
 M — Meter

CONNECTOR TYPE

- 1 — ST
- 2 — SC
- 3 — FC
- 4 — SMA
- 5 — MIC
- 6 — D4
- 7 — LC
- 8 — MTRJ

Axess Offers SingleMode and Multimode(50/125um and 62.5um)Fiber Optic Patch Cord(both simplex and duplex)in a wide variety of configurations of ST,SC,FC,MTRJ,in several lengths.Other connectors and various lengths specified by customers,are available too.

Example: XA6-72011M-0030 Duplex SingleMode 9/125um ST/ST(3.0 Meter)



Made-to Order Mode Conditioning Patch cords. Specify 50/125um or 62.5/125um,length and connector type.

Cable: All Fiber Optic patch cord are assembled and 100% tested,to offer superior performance.

Copper Components



Keystone Modular Jack (XA-RJ45KJ)

- Meets TIA/EIA 568-B.2 Category 5e requirement
- Rated to 100 Mbps applications
- ATM, ISDN, 4/16 MB Token Ring
- Ethernet, Fast Ethernet, CDDI
- Options for 110 & Krone Type Termination
- Different colors available upon request

*Also Available in Cat6 Version



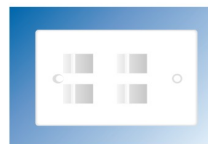
1-port Shuttered Horizontal Faceplate(XA-HF1P)

- Standard Keystone jack opening with shutter
- ABS UL94V-0 thermoplastic material
- US Style



2-port Shuttered Horizontal Faceplate (XA-HF2P)

- Standard Keystone jack opening with shutter
- ABS UL94V-0 thermoplastic material
- US Style



4-port Shuttered Vertical Faceplate(XA-SF4P)

- Standard Keystone jack opening with shutter
- ABS UL94V-0 thermoplastic material
- US Style



110 Impact Tool (XA-T110CB)

- Punch down Wire Termination Tool for 110 IDC clips
- Spring-loaded and fully adjustable
- Adjustable high and low impact settings

Copper Components



1-Port Office Box Loaded with Cat5e Jack (XA-1PMB)

- Meets TIA/EIA 568-B.2 Category 5E requirement
- Rated to 100 Mbps applications
- ABS UL94V-0 thermoplastic material
- High performance copper alloy contacts, 50 micro inches of gold plating over nickel

*Also Available in Cat6 Version



2-Port Office Box Loaded with Cat5e Jack (XA-2PMB)

- Meets TIA/EIA 568-B.2 Category 5E requirement
- Rated to 100 Mbps applications
- ABS UL94V-0 thermoplastic material
- High performance copper alloy contacts, 50 micro inches of gold plating over nickel

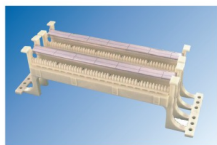
*Also Available in Cat6 Version



24-port Patch Panel 1U 110 IDC Type Cat5e (XA-24PP110)

- 1RU 24-port Pre-loaded High Density Series
- Fully protected PCB circuitry
- High performance plated copper contacts
- Conforms to TIA/EIA Category 5E Standard

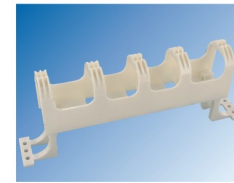
*Also Available in 48-port and Cat6 Version



110 Block 50/100-pair Kit with leg (XA-TB110)

- Conforms to Category 5e TIA/EIA-568-B.2 specifications for component performance
- 100-pair 110 block kit with block, legs, 20 4-pair 110 connectors and 4 5-pair 110 connectors or
- 50-pair 110 block kit with block, legs, 10 4-pair 110 connectors and 2 5-pair 110 connectors
- Color-coded for rapid pair identification and termination
- Solder-plated quick clips easily cut through insulation on 22-26 AWG conductors

Copper Components



110 jumper trough with leg (XA-110CM)

- Used to provide total access to cable while organizing and maintaining cable bend radius
- For 110 Terminal Blocks



LAN Cable Tester Pin-to-Pin with F Coupler (XA-DC45)

- Wire map Testing of Shielded and unshielded RJ-45 patch cords
- Continuity Testing for Coaxial Cable
- 9-volt Battery Operated

Coming up... 10G Copper Cabling Components

